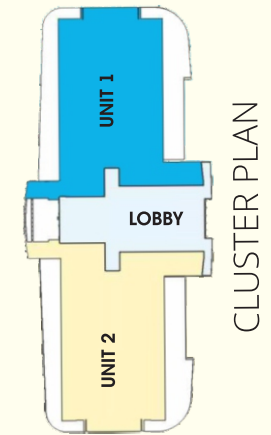
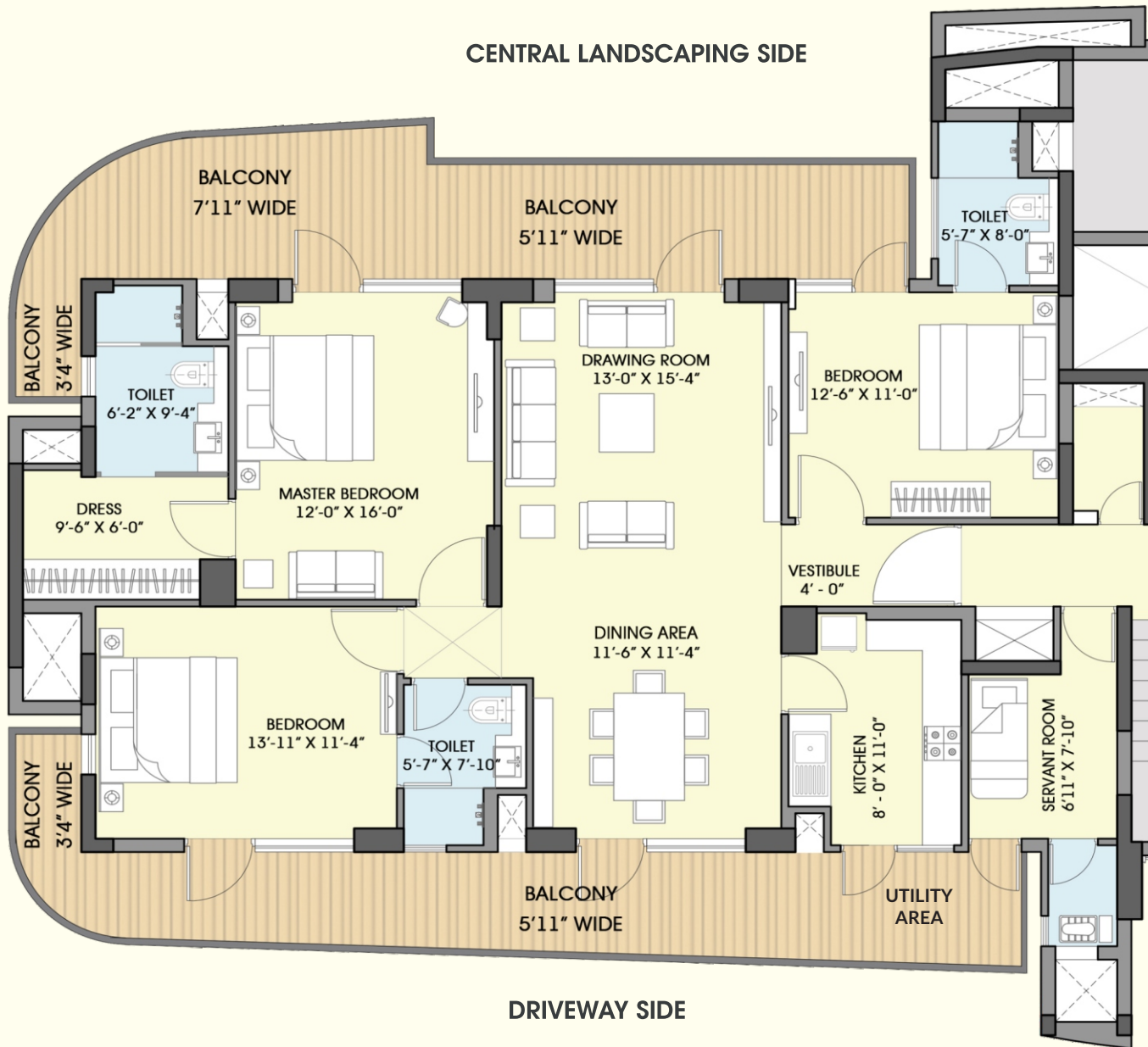


FLOOR PLAN TOWER 4 (S+20 FLOORS)



CLUSTER PLAN



KEY PLAN

3 BHK + SERVANT ROOM

CARPET AREA : 114.81 SQM (1235.81 SQFT)

BALCONY AREA : 49.88 SQM (536.90 SQFT)

BUILT UP AREA : 178.32 SQM (1919.44 SQFT)

SALEABLE AREA : 220.64 SQM (2375 SQFT)