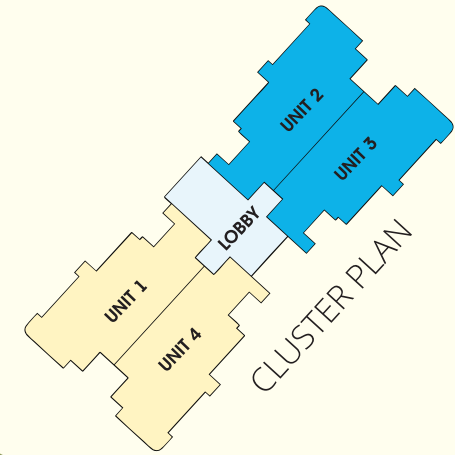
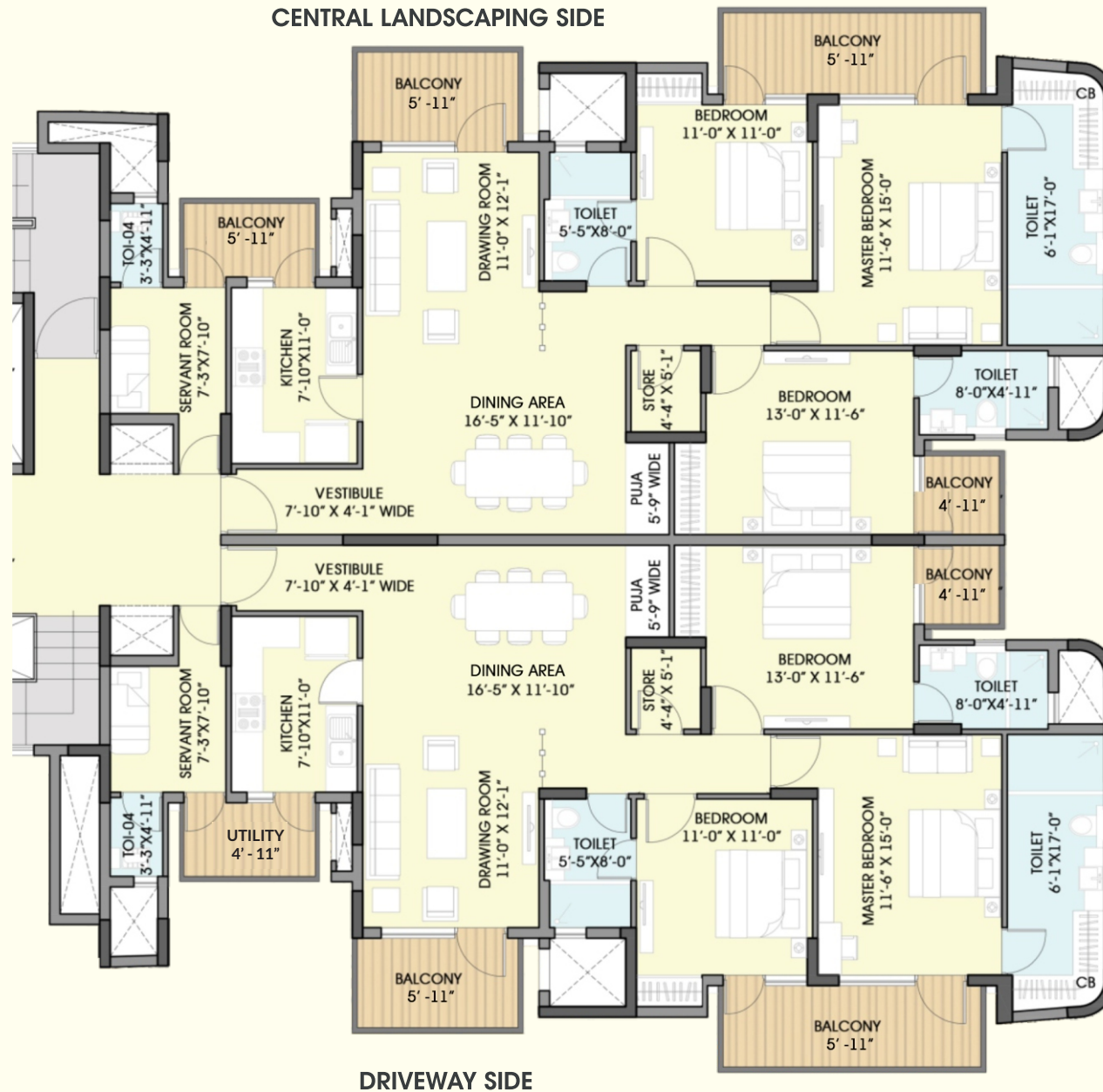


# FLOOR PLAN TOWER 2 (S+17 FLOORS)



KEY PLAN

3 BHK + SERVANT ROOM

CARPET AREA	: 119.16 SQM (1282.63 SQFT)
BALCONY ARE	: 20.678 SQM (222.58 SQFT)
BUILT UP AREA	: 164.03 SQM (1765.62 SQFT)
SALEABLE AREA	: 181.623 SQM (1955 SQFT)